



IPC



VACUUM CLEANERS - DUST EXTRACTORS

CYCLONE



VACUUM CLEANERS - DUST EXTRACTORS

CYCLONE RANGE

POWER MAX

3500 w

WATER LIFT

2230 mmH₂O

AIRFLOW

765 m³/h



MOST FREQUENTLY USE

CONSTRUCTION



HEAVY INDUSTRY



INNOVATIONS



CYCLONE SYSTEM



BLACK IS GREEN™



CYCLONE SYSTEM

NO LOSS OF SUCTION POWER AND FILTER ALWAYS CLEAN

Unlike other dust extractors, our Cyclone technology allows you to extract dust, sludge and hot mastic without damaging or compromising the cleaning system and the filters life cycle.

A guaranteed high productivity and suction performance until tank capacity is full. Ideal for vacuuming through puddles or extracting fragmented debris.



**LESS CLOGS.
MORE
CLEANING.**

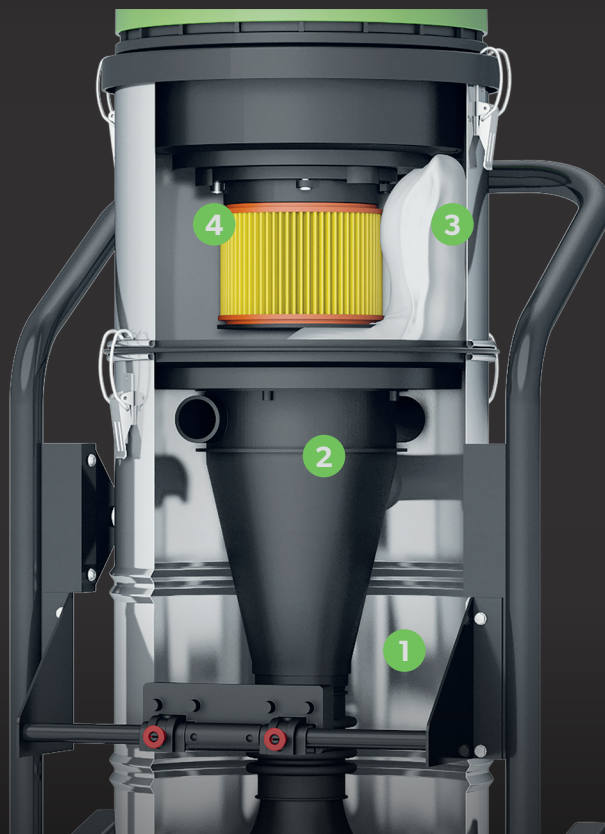
BENEFITS

- 01 No electronic switches, no sensors and no control panels = no hassle.
- 02 HEPA cartridge will always be clean ensuring the highest filtration efficiency level.
- 03 Decanter facilitates fine dust disposal by simply replacing the microfiber bag without any contact with waste material.
- 04 A specifically designed structure enabling the collection of large volumes of material.



MULTISTAGE FILTRATION

Ideal to vacuum large quantities of fine dust and debris without clogging the cartridge filter.



4 STAGES OF FILTRATION

1° STAGE
THE EXTERNAL OF
CYCLONE SYSTEM

2° STAGE
THE INTERNAL OF
CYCLONE SYSTEM

3° STAGE
THE MICROFIBER BAG INSIDE
THE DECANTER TANK

4° STAGE
HEPA CARTRIDGE

4 STAGES OF FILTRATION

- 01 Air, dust and debris are diverted by the deflector during the downward anticlockwise rotation. Heavier debris are collected on the bottom of the tank. The flow returns back to the Cyclone holes.
- 02 The flow descends clockwise into the Cyclone. Finer powder drops on the bottom of the Cyclone and finally goes back.
- 03 Air and dust are filtered by the microfiber bag.
- 04 99.9% Hepa filtration. Hepa filter is always cleaned thanks to Cyclone system.

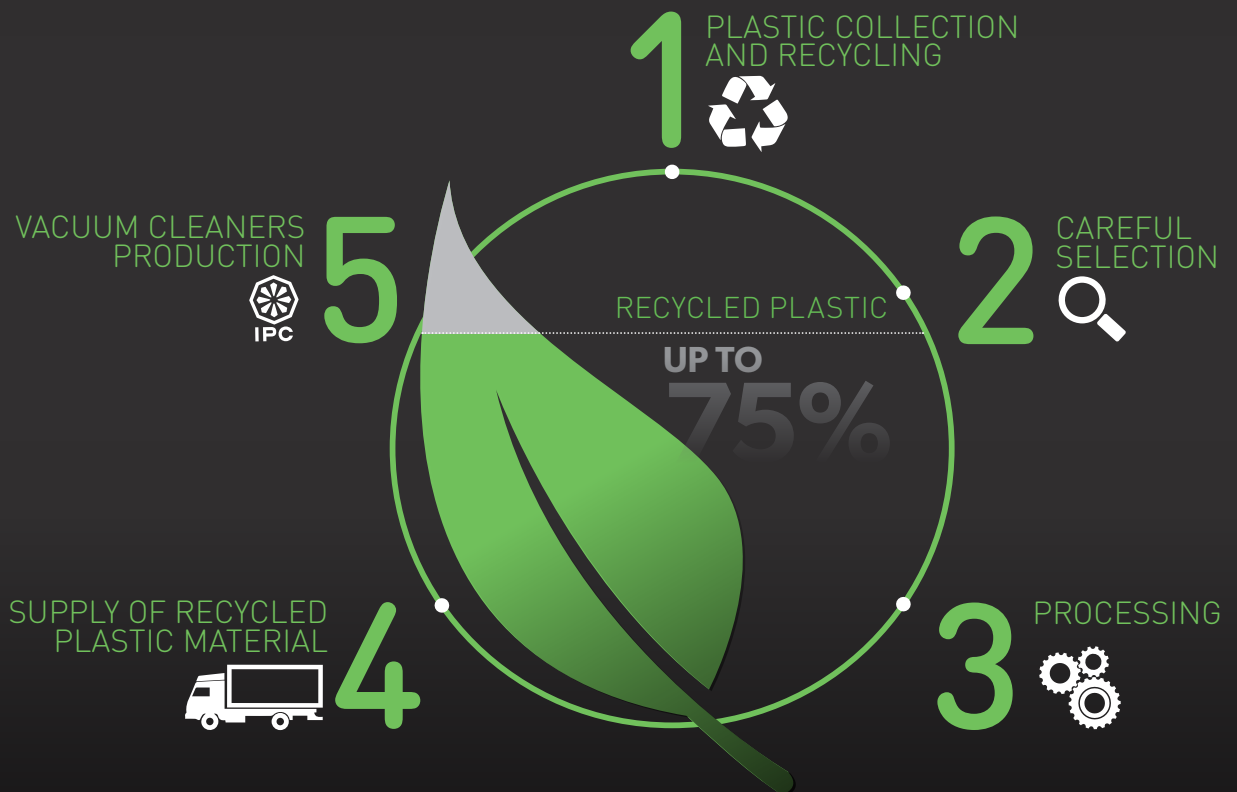


BLACK
IS
GREEN™



UP TO 75% RECYCLED PLASTIC

Our designers have created an innovative and fully equipped product range conceived for professional cleaning. Produced following IPC exclusive technology, these new products are eco-friendly and created using high quality recycled plastic, in order to promote sustainable development and environmental protection.



BENEFITS

- 01 Black is Green™ recycled plastic is a raw material made of the best and strictly selected plastic waste. Manufactured through an innovative process which guarantees strict quality and safety controls, Black is Green™ plastic has the same features of brand new plastic, but it is eco-friendly because obtained from recycled material.
- 02 Recycled plastic produces no waste, it is recyclable and in compliance with RoHS and REACH guidelines.
- 03 TUV Certified recycling process and production.

SUGGESTED SECTORS

CONSTRUCTION



BRICK/BLOCK AND CERAMICS

- ▶ RESIDUALS FROM WALLS/FLOORS CUTTINGS AND GRINDING
- ▶ SUCTION OF MASONRY SCRAPS
- ▶ CLEANING OF BAGS ACCIDENTAL SPILLINGS

PRECAST CONCRETE AND BUILDING MATERIALS

- ▶ RESIDUALS FROM WALLS SMOOTHING PROCESSES
- ▶ FLOORS SMOOTHING SCRAPS
- ▶ DISPOSAL OF BULKY MATERIAL

HEAVY INDUSTRY



FOUNDRIES AND AGGREGATE/MINING

- ▶ RAW MATERIALS RECOVERY
- ▶ DISPOSAL OF BULKY MATERIAL
- ▶ CLEANING OF CONVEYORS OR PRODUCTION MACHINERY

GLASS AND FIBERGLASS

- ▶ DUST PRODUCED BY BEAM OR WINDOWS FIXTURES SMOOTHING PROCESSES
- ▶ ACCIDENTAL SPILLINGS RECOVERY
- ▶ GENERAL MAINTENANCE OF PRODUCTION PLANT

GS 3 MBAG OPT CYC

NEW

EXCLUSIVE FEATURES



HEAVY
DUTY
TROLLEY

- ▶ MAXIBAG COLLECTION SYSTEM
- ▶ DETACHABLE SYSTEM FOR QUICK REPLACEMENT OF MAXIBAG
- ▶ SELF DISCHARGE VALVE WITH BEST SEALING
- ▶ AISI 430 INDUSTRIAL FRAMEWORK
- ▶ BIG AND BRAKED WHEELS
- ▶ MULTI STAGE FILTRATION
- ▶ ELECTROSTATIC DISSIPATION
- ▶ INNOVATIVE GASKET
- ▶ STRONG HOOKS
- ▶ INDEPENDENT MOTORS WITH LIGHT SWITCHES
- ▶ MICROFIBER BAG
- ▶ HEPA H13 CARTRIDGE
- ▶ RELIABLE CONSTRUCTION FOR INTENSIVE USE

TECHNICAL DATA

		GS 3 MBAG OPT CYC
		ASD013435
Code		
PERFORMANCE		
Usage		DRY
Motor		3
Power	W	3400-3500 max
Voltage	V	220-240
Water lift	mmH ₂ O	2230
Airflow	m ³ /h	765
Bag capacity	m	20
Cable length	m	8,5
Filtering surface	cm ²	2260
Sound Pressure Level (EN 60704-1; EN 60704-2-1; IEC 60335-2-69)	dB(A)	76
Diameter of inlet	mm	60 / metal
Dimensions (LxWxH)	mm	600x620x1727
Weight	kg	56

SPECS



SELF DISCHARGE VALVE



MAXIBAG COLLECTION SYSTEM



ALUMINIUM INLET

GS 3/78 OPT CYC

EXCLUSIVE FEATURES

- ▶ AISI 430 INDUSTRIAL FRAMEWORK
- ▶ BIG AND BRAKED WHEELS
- ▶ MULTI STAGE FILTRATION
- ▶ ELECTROSTATIC DISSIPATION
- ▶ INNOVATIVE GASKET
- ▶ STRONG HOOKS
- ▶ INDEPENDENT MOTORS WITH LIGHT SWITCHES
- ▶ TIPPING TROLLEY
- ▶ DETACHABLE TANK
- ▶ MICROFIBER BAG
- ▶ HEPA H13 CARTRIDGE
- ▶ RELIABLE CONSTRUCTION FOR INTENSIVE USE

COMPACT
STURDY
TROLLEY



TECHNICAL DATA

GS 3/78 OPT CYC ASD015517

Code		ASD015517
PERFORMANCE		
Usage		DRY
Motor		3
Power	W	3400-3500 max
Voltage	V	220-240
Water lift	mmH ₂ O	2230
Airflow	m ³ /h	765
Tank Capacity/Material	l	78/steel
Cable length	m	8,5
Filtering surface	cm ²	2260
Sound Pressure Level (EN 60704-1; EN 60704-2-1; IEC 60335-2-69)	dB(A)	76
Diameter of inlet	mm	60 / conductive plastic
Dimensions (LxWxH)	mm	600x620x1335
Weight	kg	43

SPECS



STURDY TROLLEY



DETACHABLE TANK



TIPPING TANK

GS 3/78 CYC

EXCLUSIVE FEATURES

- ▶ AISI 430 INDUSTRIAL FRAMEWORK
- ▶ MULTI STAGE FILTRATION
- ▶ ELECTROSTATIC DISSIPATION
- ▶ INNOVATIVE GASKET
- ▶ STRONG HOOKS
- ▶ INDEPENDENT MOTORS WITH LIGHT SWITCHES
- ▶ TIPPING TROLLEY
- ▶ DETACHABLE TANK
- ▶ MICROFIBER BAG
- ▶ HEPA H13 CARTRIDGE
- ▶ RELIABLE CNOSTRUCTION FOR INTENSIVE USE

LIGHTWEIGHT
TROLLEY



TECHNICAL DATA

		GS 3/78 CYC
Code		ASD015516
PERFORMANCE		
Usage		DRY
Motor		3
Power	W	3400-3500 max
Voltage	V	220-240
Water lift	mmH ₂ O	2230
Airflow	m ³ /h	765
Tank Capacity/Material	l	78/steel
Cable length	m	8,5
Filtering surface	cm ²	2260
Sound Pressure Level (EN 60704-1; EN 60704-2-1; IEC 60335-2-69)	dB(A)	76
Diameter of inlet	mm	60 / conductive plastic
Dimensions (LxWxH)	mm	680x620x1110
Weight	kg	33

SPECS



DETACHABLE TANK



HEPA CARTRIDGE 2.260 CM²



CYCLONE SYSTEM

G3 MBAG CYC



ADJUSTABLE
HEIGHT
TROLLEY

WORK POSITION



EXCLUSIVE FEATURES

- ▶ MAXIBAG COLLECTION SYSTEM
- ▶ DETACHABLE SYSTEM FOR QUICK REPLACEMENT OF MAXIBAG
- ▶ SELF DISCHARGE VALVE WITH BEST SEALING
- ▶ AISI 430 INDUSTRIAL FRAMEWORK
- ▶ BIG AND BRAKED WHEELS
- ▶ MULTI STAGE FILTRATION
- ▶ ELECTROSTATIC DISSIPATION
- ▶ INNOVATIVE GASKET
- ▶ STRONG HOOKS
- ▶ INDEPENDENT MOTORS WITH LIGHT SWITCHES
- ▶ MICROFIBER BAG
- ▶ HEPA H13 CARTRIDGE
- ▶ RELIABLE CONSTRUCTION FOR INTENSIVE USE

TECHNICAL DATA

		G3 MBAG CYC
		ASD015518
Code		
PERFORMANCE		
Usage		DRY
Motor		3
Power	W	3400-3500 max
Voltage	V	220-240
Water lift	mmH ₂ O	2230
Airflow	m ³ /h	765
Bag capacity	m	20
Cable length	m	8,5
Filtering surface	cm ²	2260
Sound Pressure Level (EN 60704-1; EN 60704-2-1; IEC 60335-2-69)	dB(A)	76
Diameter of inlet	mm	60 / conductive plastic
Dimensions (LxWxH)	mm	590x590x1770/1440
Weight	kg	42

SPECS



MAXIBAG COLLECTION SYSTEM



ADJUSTABLE HEIGHT TROLLEY



MICROFIBER BAG PROTECTS THE CARTRIDGE

CYCLONE PRE-SEPARATOR MAXIBAG



A pre-separator is a **collection device**, simply connected with a vacuum cleaner **to collect more powder and debris** and if the filters in the vacuum are clogging too soon.

Benefits:

- More productivity and powder collection;
- Easier removal, handling and disposal of the debris.

EXCLUSIVE FEATURES

- ▶ MAXIBAG COLLECTION SYSTEM
- ▶ DETACHABLE SYSTEM FOR QUICK REPLACEMENT OF MAXIBAG
- ▶ SELF DISCHARGE VALVE WITH BEST SEALING
- ▶ AISI 430 INDUSTRIAL FRAMEWORK
- ▶ BIG AND BRAKED WHEELS
- ▶ MULTI STAGE FILTRATION
- ▶ INNOVATIVE GASKET
- ▶ STRONG HOOKS
- ▶ MICROFIBER BAG
- ▶ HEPA H13 CARTRIDGE
- ▶ RELIABLE CONSTRUCTION FOR INTENSIVE USE

MODE OF OPERATION



TECHNICAL DATA

		CYCLONE PRE-SEPARATOR MAXIBAG PMVR06389	
Code			
PERFORMANCE			
Usage			DRY
Bag capacity	m		20
Diameter of inlet	mm		60 / conductive plastic
Dimensions (LxWxH)	mm		590x590x1570/1240
Weight	kg		30

SPECS



MAXIBAG COLLECTION SYSTEM



ADJUSTABLE HEIGHT TROLLEY



ELBOW

STANDARD AND OPTIONAL ACCESSORIES

● STANDARD

○ OPTIONAL

GS 3 MBAG OPT CYC
CODE: ASD013435

GS 3/78 OPT CYC
CODE: ASD015517

GS 3/78 CYC
CODE: ASD015516

G3 MBAG CYC
CODE: ASD015518

**CYCLONE
PRE-SEPARATOR
MAXIBAG**
CODE: PMVR06389



CODE: MPVR28723
FASTENING PLASTIC RING

●

●

●

●

●



CODE: FTDP28843
HEPA H13 CARTRIDGE
2.260 cm²

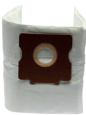
●

●

●

●

●



CODE: FTDP00462
MICROFIBER BAG 1 PC

●

●

●

●

●

CODE: KTRI04795
MICROFIBER BAG
SET OF 10 PCS

○

○

○

○

○



CODE: MISC00025
LONGOPAC

●

●

●



CODE: TBFX01270
CONDUCTIVE FLEXIBLE
HOSE 5 m Ø50/60 mm

●

●

●

●

○



CODE: LAFN49581
COMPLETE ALUMINIUM
DOUBLE WAND Ø50 mm

●

○

○

○

○



CODE: SPPV01960
BRISTLE BRUSH Ø50 mm

●

○

○

○

○



CODE: SPPV49597
RUBBER FLAT LANCE
Ø50 mm

●

○

○

○

○



CODE: KTRI02735
CONDUCTIVE TOOL KIT
Ø38 mm

○

○

○

○

○



CODE: SPPV37133
BRISTLE BRUSH Ø38 mm

○

○

○

○

○

IP Cleaning Srl

Viale Treviso 63
30026 Summaga di Portogruaro (VE) - Italy

Tel. +39 0421 205511 - Fax +39 0421 204227
info@ipcworldwide.com - www.ipcworldwide.com



IPC

